

Epson 2200 Color Management



To get the best possible output quality, follow these guidelines when printing from Photoshop to the Epson 2200 inkjet printer in Emerson computer labs. These instructions are for the Windows XP version of Photoshop only (printing from OS X currently results in inconsistent output).

Step 1: Color Settings

With your file open in Photoshop, select Edit> Color Settings. Select 'North America Prepress 2' from the Settings pull-down menu. This sets Adobe RGB (1998) as the RGB working space. Click **OK** to return to your document.

Step 2: Page Setup

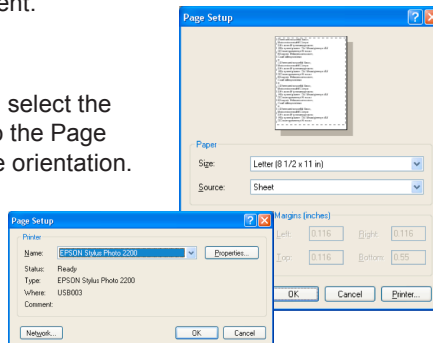
Select File> Page Setup from the menu. Click the **Printer** button and select the Epson 2200 from the drop down list. Press the **OK** button to return to the Page Setup Window. Now select the paper size you wish to print to and the orientation. Click **OK** when finished.

Step 3: Print with Preview

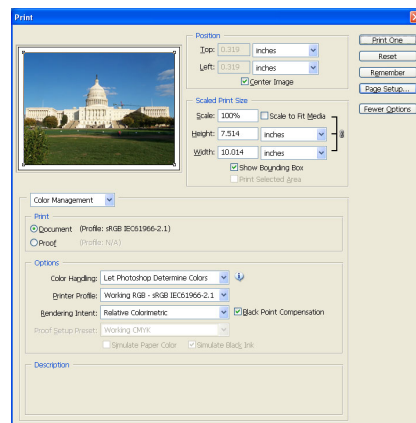
Select File> Print with Preview. Select Color Management from the pull-down menu. Additional options appear. In the Color Handling pull down menu, select 'Let Photoshop Determine Colors'. Under Printer Profile, select one of the SP2200 profiles for the paper you'll use for the print, i.e. 'SP2200 EnhancedMatte 1440PK.icc'.

In most cases, **Intent** should be set to **Relative Colormetric**. If your colors are overly saturated you can select Perceptual Colormetric instead. This reduces the color saturation so that the colors fit within the printer's color gamut.

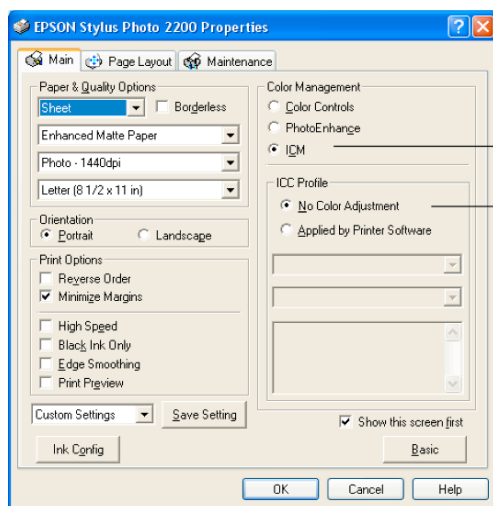
Finally, adjust the Print Size of your document by selecting either **Scale to Fit Media** or using the **Height** and **Width** boxes. When fished, click the **Print** button.



Page Setup Windows



Print with Preview Window



Epson Printing Properties

Step 4: Printing

In the Print window (picture not shown), make sure your printer is selected and click the **Properties** button. Click the **Advanced** button in the window that appears. Select the paper type setting for the paper you'll use for the print, then select the correct resolution setting. Turn off the **High Speed** and **Edge Smoothing** options, if they are available. Click the **ICM** button under Color Management. Click the **No Color Adjustment** button.

Note: Make sure that you select **No Color Adjustment**. If you don't, the printer driver will apply additional correction to the image data, producing inaccurate results.

Click OK, then OK again on the previous window to send the job to the Print Station.

For additional information, please contact the IT Help Desk at 617.824x8080

© 2004, IT Help Desk, Emerson College