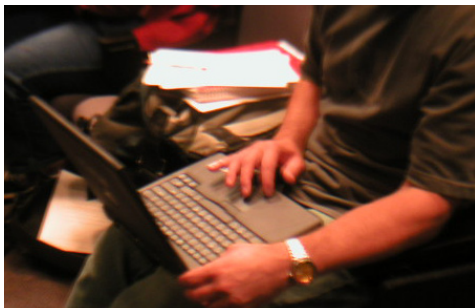


# Using the Mobile Teaching Lab



The Mobile Teaching Lab (MTL) consists of 23 student laptop computers and one instructor's laptop. These are fully functioning lab workstations connected by a localized wireless network and featuring a wide range of software for word processing, image editing, web development, and more. For more information on the MTL, or any other lab on campus, please visit <http://www.emerson.edu/helpdesk> and click on the Lab Information link.

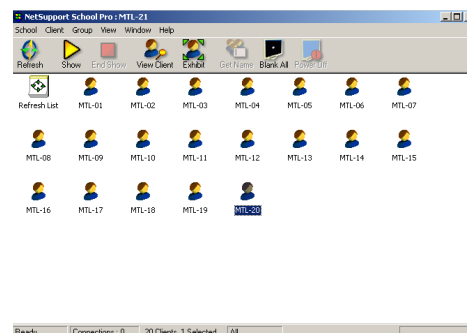
## Getting Started

To log in to an MTL workstation, use your ECnet username and password. If you have a problem logging in, visit the IT Help Desk for assistance.

The MTL Instructor Station has special software which will allow you to project the images from your screen to the screens of the other workstations and observe the screens of the student workstations. To launch this software, click the Net Support Tutor icon in the **All Programs** folder of the **Start Menu**.



As the program starts, it will scan the labs' local network for student workstations that are in use. Once it has detected the workstations, you will be able to present material to them on their computer screens.



*The Net Support Tutor window*



Get Name

The Get Name button will list the names of users logged into the MTL workstations, allowing you to distinguish them by name, rather than workstation number.



Show

The Show button shows the instructor display to all student workstations, or, if desired, a specified list of workstations.



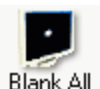
View Client

The View Client button pulls up the display of the selected workstation in a separate window.



Exhibit

The Exhibit button broadcasts a selected workstation to all other workstations, or, if desired, a specified list of workstations.



Blank All

The Blank All button blacks out the student displays. Clicking the button again will restore them.



Refresh List

The Refresh List button allows the software to detect users who have logged in to workstations after the program was started.

## Printing

The Mobile Teaching Lab is equipped with a networked black and white laser printer that can be accessed from any MTL workstation. To print, simply click on the File menu and select Print in any open application.



## Data Storage

The MTL's wireless network allows all workstations access to 8-Day Public, Courses, and Pages. Also available is a zip 250 drive that can be connected to individual workstations.



## Support

For assistance, please visit the IT Help Desk on the 4th Floor of the Walker Building (120 Boylston), or call ext. 8080.