

Working with Special Effects

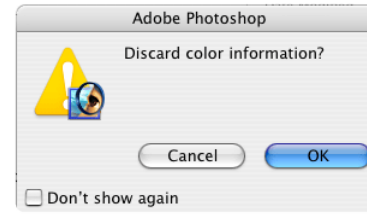
Change Color Images to Black and White

Color images can be changed to grayscale in one easy step.

To change an image's color mode:

1. From the *Image* menu, select **Mode**, then **Grayscale**.

Click **OK** when the *Discard color information?* prompt screen appears.



Apply an Effect to an Entire Image

Many effects are achieved by applying Filters to an image. Some filters apply a distorted effect to an image while other filters can be used to enhance the image. Experiment with different filters to find the ones most appropriate for your project.

To apply a Filter:

1. Select a filter from the *Filter* menu (fig. A). The settings panel for that effect appears (fig. B). If it isn't already checked, click the **Preview** checkbox.
2. Adjust the filter's settings while pre-viewing the image. Once you have finished making adjustments, click **OK**. The filter is applied.

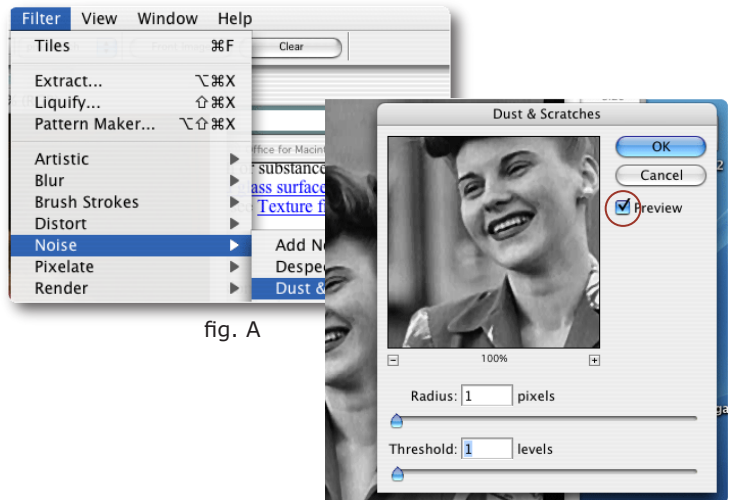





fig. A

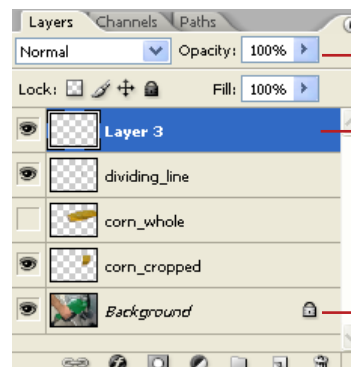
fig. B

Apply an Effect to a Layer

Photoshop effects are located on the Layers palette. Each layer can contain different parts of an image. When creating new layers in Photoshop, take care to name descriptively.

Click to...

-  Create a new layer
-  Delete a layer
-  View or hide a layer



Change the level of transparency

The topmost layer will appear as the foreground of the image

Indicates the layer is locked and cannot be edited

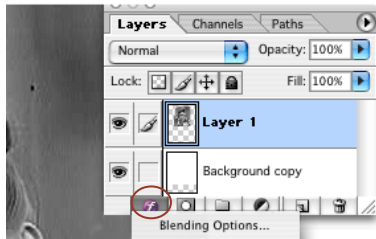


fig. A

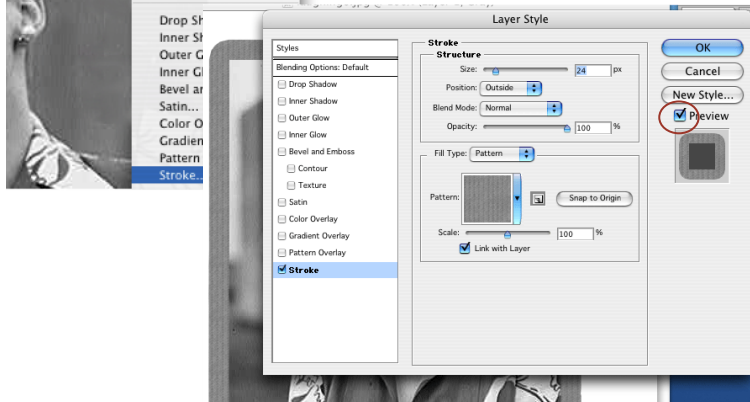


fig. B

If the Layers palette is not visible, select **Layers** from the Window menu.

To add effects to image layers:

1. Click the layer to which you want to apply a filter. Click the **Effects** icon and select an effect from the drop-down list (fig. A). The settings panel for that effect appears (fig. B). If it isn't already checked, click the **Preview** checkbox.
2. Adjust the effect's settings while previewing the image. Once you have finished making adjustments, click **OK**. The effect is applied.

Saving Your Image

First, save your PSD file

Always save your original PSD file, with the layers intact, so that you can go back and alter different parts of an image individually.

Then, prepare your image to be imported into iMovie by saving as a JPG

Click on *File > Save for Web...*

A window will pop-up showing you a preview of the image. You can choose to save as a JPG or GIF depending on the type of image.* Click **Save**.

Note: Save your GIFS/JPGS and your PSDs in separate folders according to your File Structure.

*Gifs are better for computer-generated images
JPGS are better for photographs

