

## Connecting to ECmobile from a Windows XP Computer

Before attempting to connect, please make sure that your operating system is up to date - including installing SP2 for Windows XP - and you have the latest drivers for your wireless card. The following instructions are for Windows XP. Note that at this time, support for Windows 2000 is limited. Check with your wireless card manufacturer to see if they support 802.1x Authentication with PEAP. If this is your first time connecting to our new ECmobile service you must first sign up before you can connect. **You only have to sign up once, no matter how many computers you use in the future.** You can sign up before-hand from any computer by going to <https://pages.emerson.edu/ecmobile> or from the special "ecmobile-signup" wireless network. This document assumes you are connecting wirelessly to sign up.

### I Signup

1. Right-click on the Windows wireless network icon in your task bar. Select "View Available Wireless Networks". Connect to the wireless network named "ecmobile-signup". Your computer may warn you that this is an unsecured wireless network. Click "Connect anyway" when the dialog appears. The sign up web page you will connect to uses a secure connection so your username and password are protected.



fig. 1

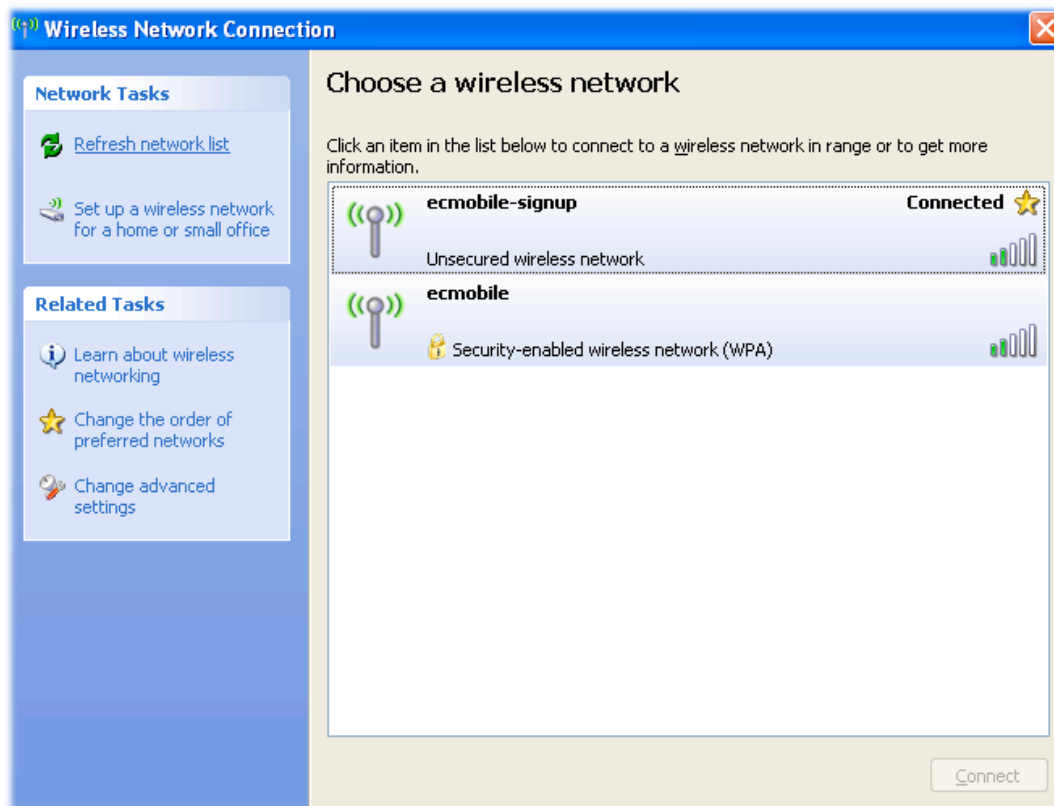


fig. 2

2. Open your web browser. You should be redirected to the ECmobile signup form. If not, go to <https://pages.emerson.edu/ecmobile>  
3. Click on the link on the left to go to the sign up page, read the network usage policy, enter your username and password and submit the form. You are now signed up to use ECmobile.

### II Connect

1. Right-click on the Windows wireless network icon in your task bar. Select "View Available Wireless Networks" (figure 1).
2. Click the "Change advanced settings" button in the sidebar to the left (figure 2). This will display the properties pane for your wireless card. Click on the Wireless Networks Tab (figure 3).

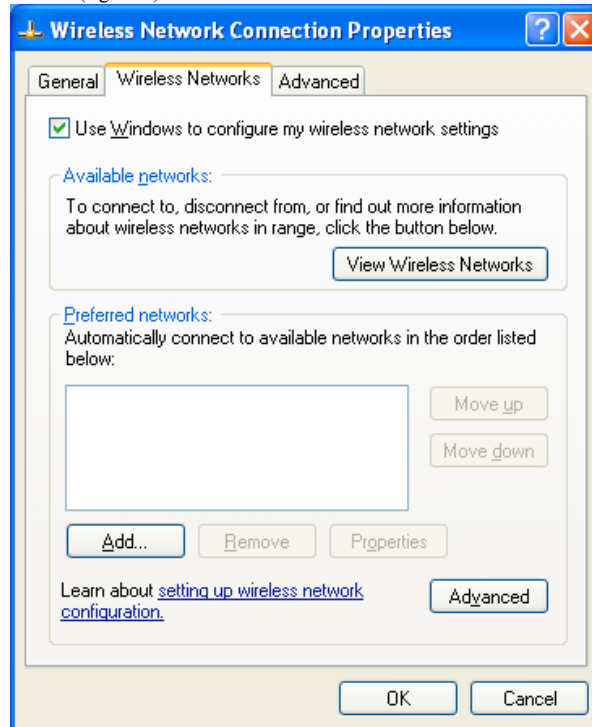


fig. 3

3. If you have "ecmobile-signup" listed under the "Preferred networks", select it and click the remove button. Otherwise, continue to step 4.
4. Click "Add"
5. On the Wireless network properties pane (figure 4), enter "ecmobile" for the "Network Name (SSID)". Under "wireless network key" change "Network Authentication" to "WPA". Set "Data Encryption" to TKIP.

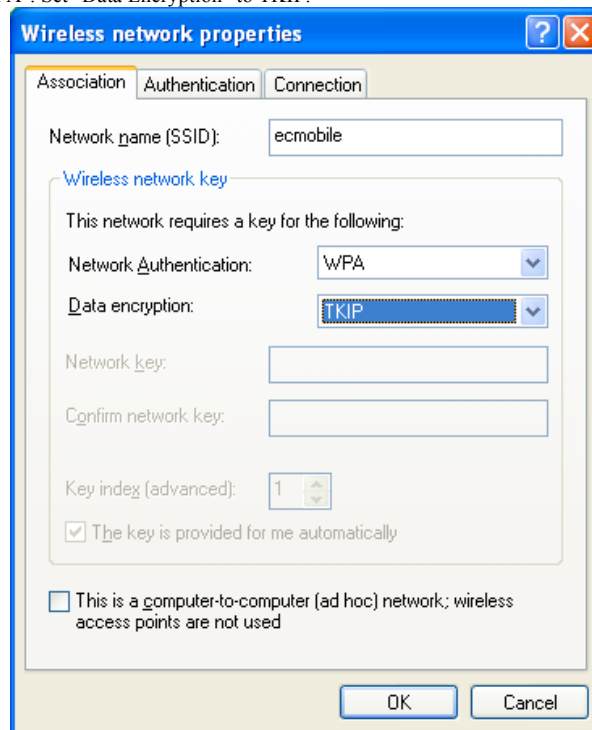


fig. 4

6. Click the Authentication tab. Set "EAP type" to "Protected EAP (PEAP)". Uncheck "Authenticate as computer when computer information is available" (figure 5).

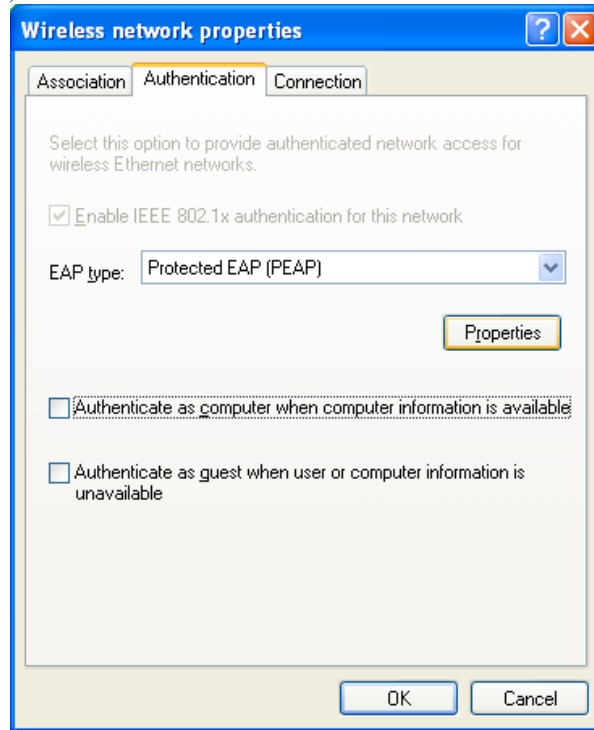


fig. 5

7. Click the properties button to display the Protected EAP Properties pane (figure 6). Under the "Trusted Root Certification Authorities" find the entry marked "Thawte Premium Server CA" and check it. Set "Select Authentication Method" to "Secured Password (EAP-MSCHAP v2)". Check "Enable Fast Reconnect".

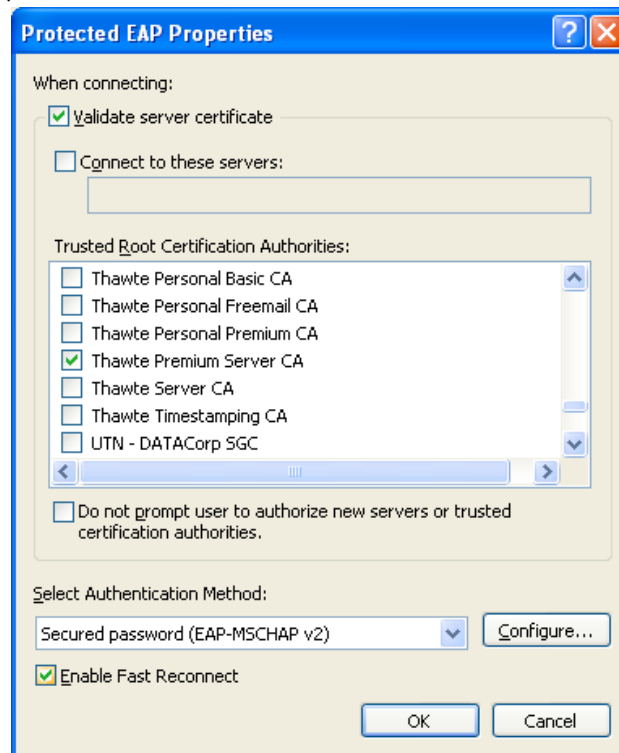


fig. 6

8. Click the Configure button to display the EAP MSCHAPv2 Properties pane (figure 7). Uncheck "Automatically use my Windows logon

name..." box.

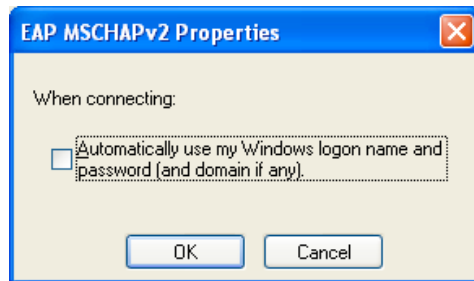


fig. 7

9. Click the "OK" button on each property window until you're back at your desktop.

10. Reboot your computer.

11. After rebooting, right-click on the Windows wireless networks icon in the task bar and select "View Available Wireless Networks" (figure 1).

12. A balloon will appear near the task bar asking for ".certificate or other credentials" (figure 8). Click this balloon to display an authentication dialog box (figure 9). Enter your ECnet username and password and click "OK".

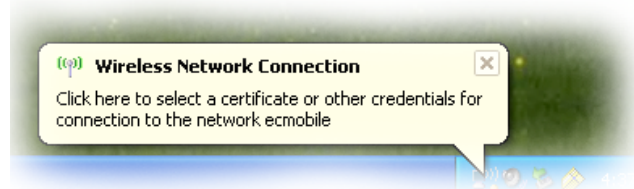


fig. 8

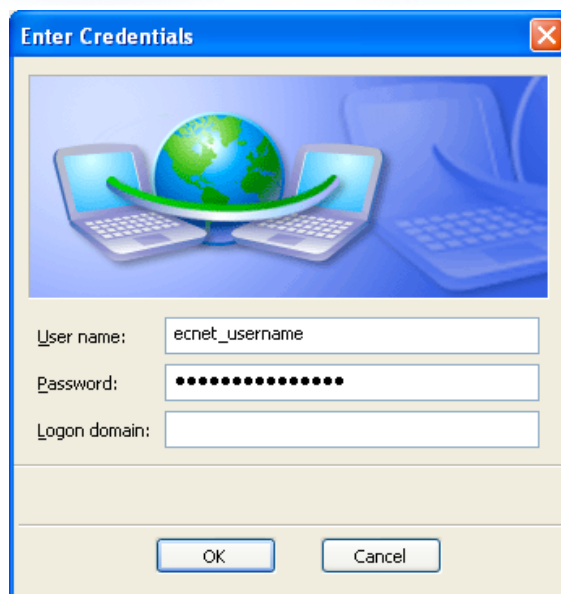


fig. 9

13. You are now connected to the wireless network.