

Connecting to ECmobile with Mac OS 10.5 Leopard

Apple's newest version of the OS X operating system includes a great number of improvements, several of which affect its networking capabilities and configuration, making for a very stable and easy connection to Emerson's ECmobile. The configuration is similar to that of 10.4 Tiger; the steps are just slightly different.

- 1) When connecting to ECmobile for the first time, you will need to complete an initial signup. If you have previously done this, you don't need to do it again.

If you haven't signed up yet, simply connect to the "ecmobile-signup" wireless network and go to <https://pages.emerson.edu/ecmobile> and enter your username and password to authenticate the page. Then enter your credentials again on the page itself and click the button labeled "I agree to the above policy and wish to sign up for ECmobile."



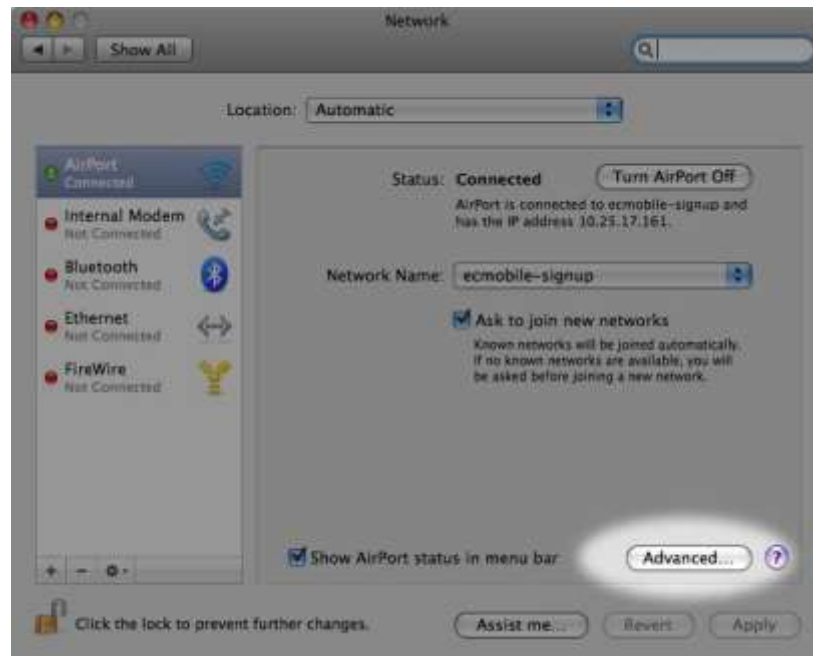
- 2) Use the link on the left side labeled "Download Emerson Certificate" (not the mobile version!) to download the .crt certificate file. Make note of the download location. **Note:** if you have previously signed up on a different computer, you still need to re-download the certificate on *this* machine.

Locate the certificate file and double click to import it.



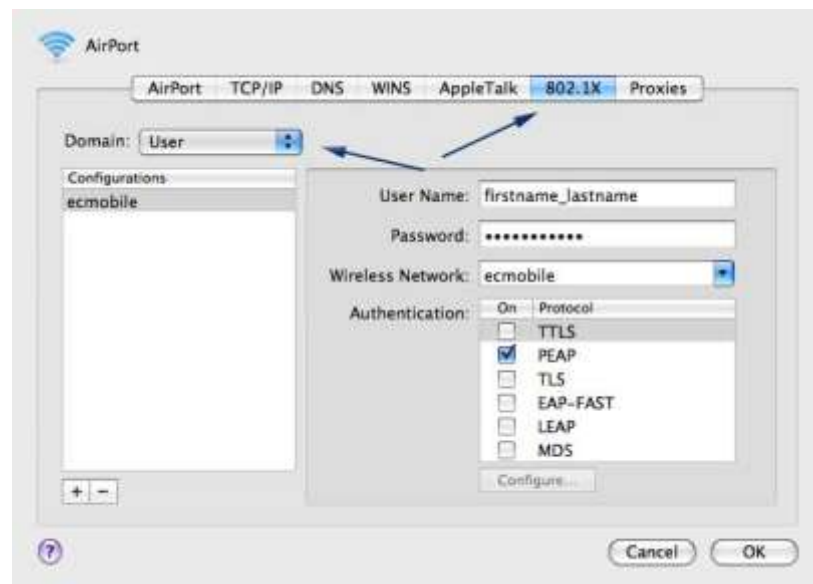
Make sure you change the keychain to "System" and then click "OK." You may have to enter your **computer's** password (not your Emerson password) to allow the change. In the following box, click "Always Trust" and enter your computer's password again. The certificate is now installed and trusted.

3) Next, open System Preferences and continue to the Network preference pane.



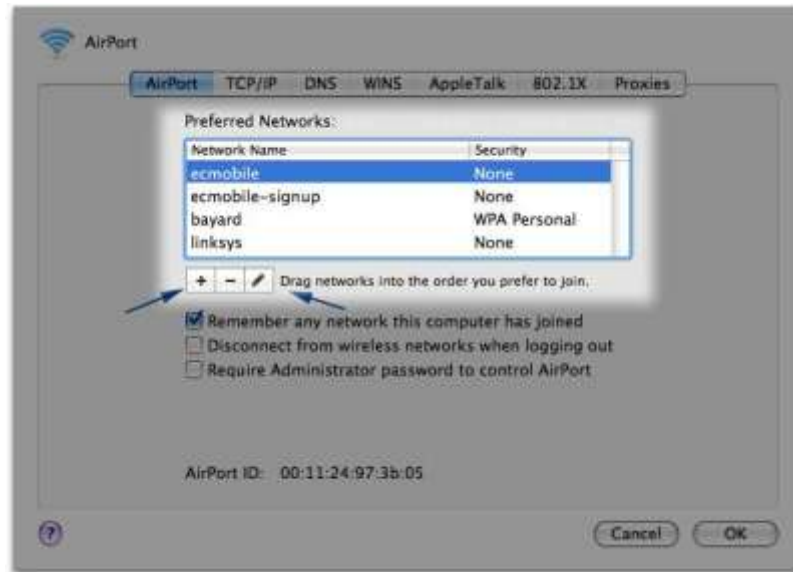
Click on the button labeled “Advanced.”

4) Across the top of the Advanced pane, click on the tab labeled “802.1X.”

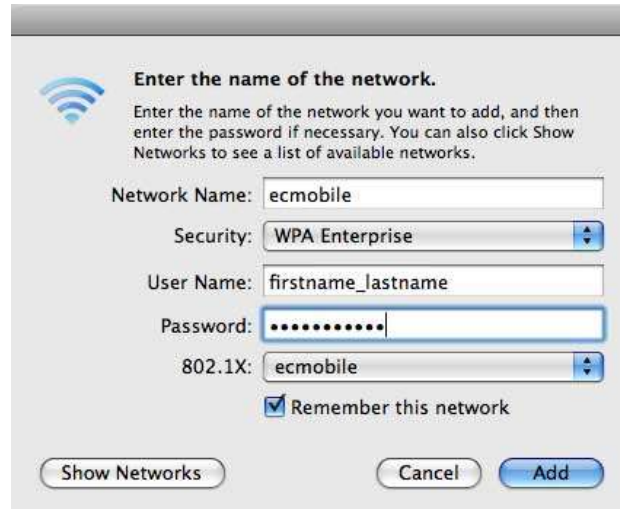


Change the Domain to “User,” and then click the plus sign at the bottom of the Configurations section. You can name your new configuration “ecmobile” and then fill out the section to the right. Enter your username and password, and enter “ecmobile” for the Wireless Network. In the Authentication section, **uncheck** everything except “PEAP.”

- 5) Click on the “Airport” tab at the top of the Advanced pane. If “ecmobile” is already in the list of wireless networks, click the pencil icon to edit the settings for it. If it’s not, click the plus sign to add it.



Make sure your settings match those below; Security should be set to “WPA Enterprise” and 802.1X should be set to “ecmobile” (or whatever else you named your configuration from the 802.1X pane). Click Add.



Back at the list of wireless networks, click on “ecmobile-signup” to select it, and then click the minus sign right below the list. That will keep your computer from automatically connecting to ecmobile-signup instead of ecmobile in the future. Then click OK to exit the Advanced preference pane.

- 6) When you return to the general Network preference pane, you should automatically disconnect from “ecmobile_signup” and reconnect to “ecmobile.” It may temporarily say “Self-Assigned IP Address,” but within about thirty seconds, your computer will authenticate itself, and the status will change to “Connected!”

Congratulations! You’ve just connected to ECmobile!